

Dear Parents,

I have been enjoying some very productive conversations with the children at lunchtime about their learning. Many of them have told me that you have been completing your homework (asking them 'What did you learn today?' rather than 'What did you **do** today?'), so well done and thank you. It already is making a difference to the conversations I am having with the children, I hope you have noticed a difference too! Keep it up!

Many of you will have already heard Mr Baker's news but for those of you who haven't I would like to take this opportunity to tell you that Mr Baker is embarking on an exciting adventure. He is taking part in an exchange scheme that involves 2 teachers changing school and homes for a year.

He has chosen Melbourne, Australia and will be swapping with Ms. Leesa Ross from January 2007—January 2008. Ms Ross will, therefore, start teaching Year 5 when we return after Christmas. She is a very experienced teacher with particular knowledge of teaching children in Year 5. She brings a high level of enthusiasm and skill to our school and is very much looking forward to working with us at Bassingbourn,

He will be staying in touch with us via e-mail and will definitely be coming back us! We are all very excited about this and are looking forward to meeting and working with Ms Ross.

Thank you

Yours sincerely

Mrs J Murray

## School Photographs

If you still haven't ordered your child's school photo don't worry  
you still have a week left.

Please can any more orders be into the school office by next  
Friday 17th November

You will still receive your photos in time for Christmas.

Many Thanks



## Textile collection

Please can you bring in your textile bag donations next Tuesday  
Please do not bring in before as we don't have the facilities to store the bags.

Many Thanks  
for you co-operation

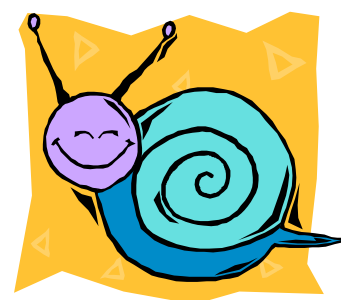


## Snail Race Night Sat 2nd December

Don't forget to buy your snail available from today from a PTA member.

Book the date in your diary

Tickets available two weeks before the event  
from the school office.



As the weather has now turned cold please can you ensure that your child brings a warm coat, with their name in for outside play.

Thank you

## Residential Visits

Places still available for the Year 6  
Isle of Wight Trip

Grafham Water Year 4 trip now full



## **DARK WINTER MORNINGS**

**I know how hard it can be to get going in the mornings but please can I gently remind you that the children should be lined up and ready to go into school for 8.45 am. However, occasionally being late is unavoidable, therefore if you do miss the 8.45 am. entrance time please bring your child to the front entrance to sign in at the school office. In addition, please keep in mind the cut off time for unauthorised absence is 9.00 am.**

Thank you

**Mrs Murray**

